



2018

# STONEWARE

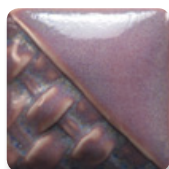
## Product Catalog

Classic | Matte | Translucent | Crystals | Wash | and more...



MaycoColors.com

# NEW STONEWARE glazes 2018



SW-165  
Lavender Mist



SW-166  
Norse Blue



SW-167  
Sand & Sea



SW-168  
Coral Sands



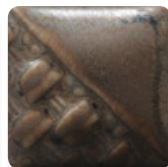
SW-169  
Frosted Lemon



SW-172  
Macadamia



SW-173  
Amber Quartz



SW-174  
Leather



SW-170  
Blue Hydrangea



SW-171  
Enchanted Forest

## NEW Dark Flux



SW-402  
Dark Flux\*

\*Flux featured with SW-119 Cinnabar



Glazes have been fired to cone 6 on white stoneware body.

Dark Flux featured with SW-119 Cinnabar

MaycoColors.com

# Stoneware Classic Glazes

Stoneware glazes move and float without running off your work. Many will break over textures, revealing secondary colors and shades.



SW-100  
Blue Surf



SW-109  
Capri Blue



SW-101  
Stoned Denim



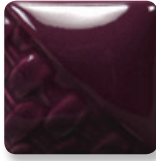
SW-121  
Smoke



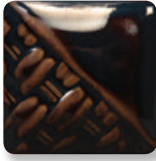
SW-108  
Green Tea



SW-125  
Purple Mint



SW-134  
Eggplant



SW-132  
Mirror Black



SW-133  
Copper Ore



SW-130  
Copper Jade



SW-129  
Copper Float



SW-128  
Cordovan



SW-112  
Tiger's Eye



SW-119  
Cinnabar



SW-113  
Speckled Plum



SW-127  
Olivine



SW-122  
Maycoshino



SW-131  
Birch



SW-110  
Oyster



SW-143  
Abalone

For additional resources see Mayco's website for detailed application advice, product safety data sheets (SDS) and more images.

## Available Sizes

- » Wide mouth Pints
- » 5 lbs & 25 lbs Dry (most glazes)
- » Washes available in 4 oz only



# Matte Stoneware Glazes

Choose from solid shades to those that create interesting surface texture as they move and break. Application thickness is a key to making mattes work for you.



SW-172  
Macadamia



SW-173  
Amber Quartz



SW-174  
Leather



SW-107  
Dunes



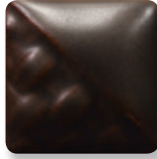
SW-124  
Matte Maycoshino



SW-145  
Tea Dust



SW-144  
Lava Rock



SW-104  
Black Walnut



SW-111  
Wrought Iron



SW-140  
Black Matte



SW-142  
Gray Matte



SW-137  
Storm Gray



SW-136  
Weathered Blue



SW-159  
Blue Matte



SW-105  
Frost Blue



SW-158  
Lilac Matte



SW-162  
Pink Matte



SW-163  
Soft Red Matte



SW-138  
Lemon Meringue



SW-161  
Yellow Matte



SW-160  
Chartreuse Matte



SW-135  
Wintergreen



SW-164  
Satin Patina



SW-106  
Alabaster



SW-141  
White Matte

## TIPS: Matte Stoneware Glazes

- Thicker glaze application will result in greater opacity; adjust your applications, methods to achieve the desired opacity.
- SW-136 Weathered Blue, SW-137 Storm Gray, and SW-138 Lemon Meringue, are unique glazes that change in appearance with number of glaze coats. One coat will display more color with additional coats will increase mottling and white variegation.

# Translucent Stoneware Glazes

Translucent glazes add delicate color, allowing design work beneath to show through. These glazes heighten surface details where they gather and pool.



## TIPS: Translucent Stoneware Glazes

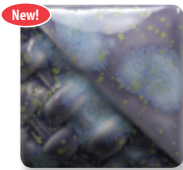
- Mayco Translucent Glazes were designed to have a hint of color with 1 coat and deeper color with 2-3 coats.
- 1 coat will allow more of the clay body to show through the glaze. Subsequent coats deepen the color.
- Used alone, Translucent Stoneware glazes produce beautiful color variations, deepening with additional coats.



# Crystal Stoneware Glazes

## TIPS: Crystal Stoneware Glaze

- Crystal glazes are dazzling glazes that are designed to expand upon the surface with bursts of color.
- Crystals will settle to the bottom of the jar, and will need thoroughly mixed prior to painting as well as in-between each coat.
- Apply 2-3 coats using a fan or hake brush to the top two-thirds of the piece.
- During your last coat, use your brush to evenly distribute the crystals over the top two-thirds of the piece and move away from the bottom third.



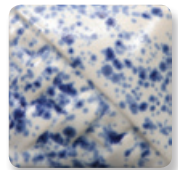
SW-170  
Blue Hydrangea



SW-171  
Enchanted Forest



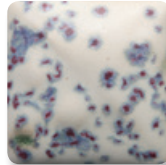
SW-156  
Galaxy



SW-152  
Blue Splatterware



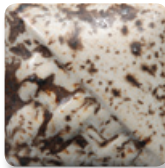
SW-116  
Robin's Egg



SW-153  
Indigo Rain



SW-117  
Honeycomb



SW-155  
Winter Wood



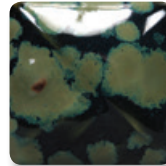
SW-148  
Lime Shower



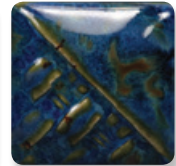
SW-146  
Aurora Green



SW-150  
Celadon Bloom



SW-151  
Olive Float



SW-115  
Midnight Rain



SW-154  
Shipwreck



SW-147  
Mooncape



SW-118  
Sea Salt



Bre Kathman  
@makeitpersonalstudio

# Stoneware Clear Glazes

Mayco Stoneware Clear, Matte Clear and Crackle Matte Clear will preserve and enhance the surface of your work.



SW-001  
Stoneware Clear

SW-001 Stoneware Clear is formulated to reach high fire temperatures up to cone 10.



SW-002  
Matte Clear

SW-002 Matte Clear may turn to a satin finish in higher temperatures.



SW-003  
Crackle Matte Clear

The crackle pattern in SW-003 Crackle Matte Clear may not develop at cone 10 temperatures. To highlight the crackle pattern, after firing wipe an acrylic or ink over the ware and wipe off, revealing and highlighting the cracking effect (\*not suitable for food surfaces).



SW-004  
Zinc-Free Clear

Zinc Free Clear is a specialty clear glaze designed for use on glazes containing chrome-based pigments. It ensures that you will get a brilliant, smooth and crystal clear surface over these colors.

## Dipping with Mayco Stoneware Dry Glazes

Potters, teachers and hobbyists will love the ease of use this product offers.

Use Mayco Stoneware Dry glazes (SDs) for fast dipping and layering, creating natural flowing effects. Fine and uniform particle size and a thorough dry mixing process make Mayco Stoneware Dry glaze consistency so perfect that sieving is optional.

Available in 5 lbs. bags of dry.  
Volume pricing available (25 lbs.)  
Contact your Mayco Distributor  
for details.



# Flux

SW-401 Light Flux  
&  
SW-402 Dark Flux



Enhance movement & promote reactions for interesting effects



\*Flux featured with SW-119 Cinnabar



\*SW-402 Dark Flux



\*SW-401 Light Flux



SW-128 Polishes/Pebbles  
SW-401 Light Flux



SW-124 Equis.  
SW-401 Light Flux



Available in Pints and 4oz jars.



SW-106 Coral Sands  
SW-402 Dark Flux



SW-173 Antler/Glaze  
SW-402 Dark Flux



## Mayco Stoneware Glazes work Great with Stroke & Coat®

Artists can incorporate and combine other Mayco products with our Stoneware glazes. Use Stroke and Coat® with Stoneware glazes for an intense splash of color or add designs for unique results. Works great with SW-401 Mayco Flux!

# Stroke & Coat



### Available sizes

- 2 oz squeeze
- 8 oz squeeze
- 16 oz squeeze
- Gallons - available in 12 colors



by Sonja Redeker  
@cumulus.clay



# Designer Liner

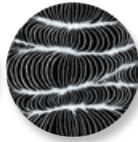


## Designer Liner at Mid-Range

The most intricate details can be created with Mayco's amazing Designer Liner under any Stoneware or Stoneware Clear glazes. Designer Liner will fire to a matte finish without Stoneware Clear or Stoneware applied overtop.



SG-401  
Black



SG-402  
White



SG-403  
Red



SG-404  
Blue



SG-405  
Green



SG-406  
Brown



SG-407  
Yellow



SG-408  
Orange



SG-409  
Bright Green



SG-410  
Bright Blue



SG-411  
Purple

\*Tiles above applied to buff stoneware clay body and fired to Cone 6.

### TIPS: Designer Liner

- Shake well. Apply even pressure to bottle to allow the Designer Liner to flow onto desired surface.
- Thickness of line will depend of how much pressure applied to the Designer Liner as well as how slow or fast the continuation of the line is drawn.
- Allow Designer Liner to completely dry before applying transparent or clear glaze over Designer Liner.



Learn more  
on YouTube.



# Stoneware Wash

Mayco Stoneware Washes are a multi-purpose product with limitless possibilities. These washes can be used alone for staining techniques or with any glaze from low-fire (cone 05/06) up to cone 10. They are beautiful in oxidation or reduction and can expand the glaze palette for an artist or teacher. Mayco Stoneware Washes are metallic glaze colorants formulated for ease of use and versatility. Washes are highly concentrated and available only in 4oz jars.



SW-301  
Iron Wash



SW-302  
Rutile Wash



SW-303  
Manganese Wash



SW-304  
Copper Wash



SW-305  
Cobalt Wash

## TIPS: Wash

- Washes are concentrated, therefore adding water is recommended. Mix only the amount you are planning to use.
- Washes can be applied in a variety of ways, but are often painted into textured areas and wiped away on the higher surface to accentuate the texture.
- Can be fired from cone 06-10.



## Stoneware White Casting Slip

SLS01

Slip casting is an efficient way to make interesting ceramic forms and is a great way to mass produce ceramic shapes. Use casting slip with plaster molds for a wide variety of pieces, shapes and sizes. Sold in a two gallon box. Liquid and ready to pour. Soft bisque fire to cone 04 and glaze fire to cone 05/6.

# Stoneware Glaze Assortment Kits

Mayco Stoneware Glaze assortment kits offer a variety of colors, finishes and endless possibilities for glaze combinations. **Value priced** in sets of 6, wide mouth pint jar sizes, **perfect for the studio or classroom.**

## Stoneware Stars - SWKIT3

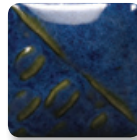
This collection of Stoneware glazes offers Mayco's top-selling colors for a broad spectrum of color shades and numerous glaze combination possibilities.



**SWKIT3** Contains 6 – pints of the following colors.



SW-119  
Cinnabar



SW-100  
Blue Surf



SW-108  
Green Tea



SW-131  
Birch



SW-101  
Stoned Denim



SW-106  
Alabaster

## Stoneware Crystal - SWKIT4

The Stoneware Crystal collection provides an assortment of Mayco's unique crystal glazes, designed to expand upon the surface with bursts of color where crystals lay. Use alone or in combination with Mayco Stoneware glazes.



**SWKIT4** Contains 6 – pints of the following colors.



SW-115  
Midnight Rain



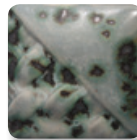
SW-116  
Robin's Egg



SW-118  
Sea Salt



SW-146  
Aurora Green



SW-147  
Moonscape



SW-148  
Lime Shower

# Cone 10 Results for Stoneware Glazes

Mayco Stoneware glazes are intended for use at Cone 5/6 but many are also pleasing and stable at Cone 10. For Cone 10 performance results, review the individual glaze label or visit the Stoneware Glaze Cone 10 Gallery on our website for the entire line. Due to variability in clay bodies and kiln personalities, we recommend testing prior to application to artwork.



SW-100  
Blue Surf



SW-109  
Capri Blue



SW-101  
Stoned Denim



SW-121  
Smoke



SW-108  
Green Tea



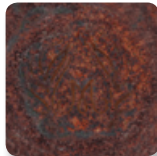
SW-125  
Purple Mint



SW-128  
Cordovan



SW-133  
Copper Ore



SW-130  
Copper Jade



SW-129  
Copper Float



SW-119  
Cinnabar



SW-112  
Tiger's Eye



SW-127  
Olivine



SW-122  
Maycoshino



SW-131  
Birch



SW-132  
Mirror Black



SW-124  
Matte Maycoshino



SW-172  
Macadamia



SW-104  
Black Walnut



SW-111  
Wrought Iron



SW-140  
Black Matte



SW-105  
Frost Blue



SW-173  
Amber Quartz



SW-106  
Alabaster



SW-209  
Charcoal

# Cone 10 Results for Stoneware Glazes



SW-174  
Leather



SW-204  
Amber Topaz



SW-203  
Root Beer



SW-206  
Melon



SW-205  
Coral



SW-207  
Chambrey



SW-123  
Sapphire



SW-211  
Glacier Blue



SW-212  
Peacock



SW-120  
Northern Woods



SW-210  
Emerald



SW-250  
White Opal



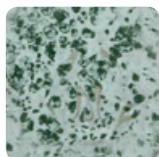
SW-251  
Pink Opal



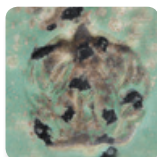
SW-252  
Blue Opal



SW-253  
Green Opal



SW-148  
Lime Shower



SW-146  
Aurora Green



SW-150  
Celadon Bloom



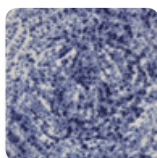
SW-147  
Moonscapes



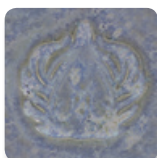
SW-154  
Shipwreck



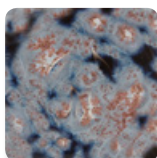
SW-115  
Midnight Rain



SW-152  
Blue Splatterware



SW-116  
Robin's Egg



SW-156  
Galaxy



SW-118  
Sea Salt



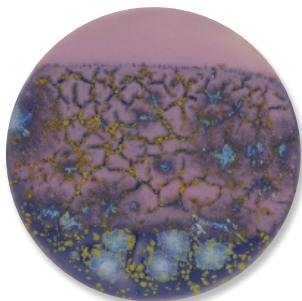
SW-155  
Winter Wood



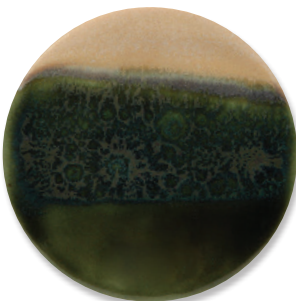
SW-117  
Honeycomb

## TIP:

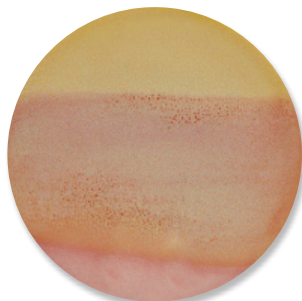
- Mayco Stoneware glazes are stable at cone 10 with dynamic effects and color variations.
- The choice of clay body, thickness of glaze application, firing process and temperature will affect the fired results. Always test in your kiln on your clay body.



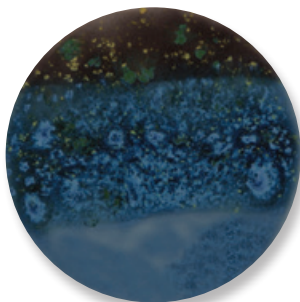
Cone 6  
SW-130 Copper Jade under SW-401 Mayco Flux



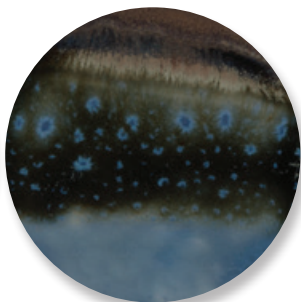
Cone 6  
SW-255 Gray Opal under SW-401 Mayco Flux



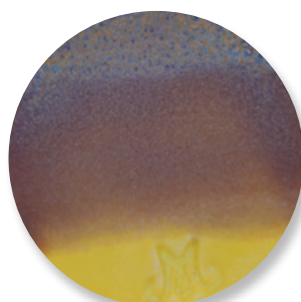
Cone 6  
SW-109 Capri Blue under SW-146 Aurora Green



SW-171  
under  
SW-252



SW-174  
under  
SW-252



SW-165  
under  
SW-254

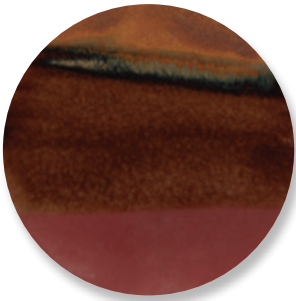


## Stoneware Glaze Combinations

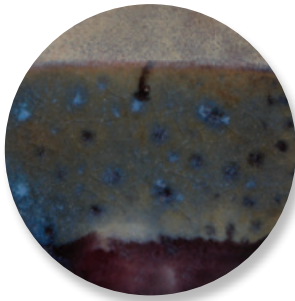
Artists, students, teachers and hobbyists can achieve these incredible finishes with a simple, two-glaze combination. The top third of the chip shows a single Mayco Stoneware glaze, the bottom third shows a second Mayco Stoneware glaze.

The middle third is the area where the two intersect to make stunning glaze combinations. All combination chips are on a white stoneware body, fired in cone 6 oxidation.

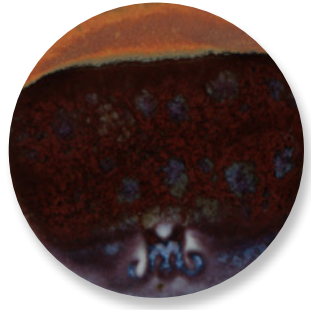
Visit us online for more Mayco Stoneware Glaze Combinations and inspiration.



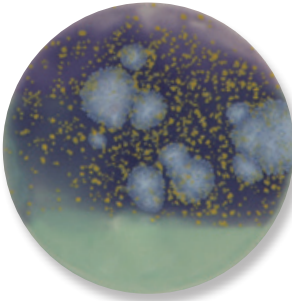
Cone 10  
SW-173 under SW-210



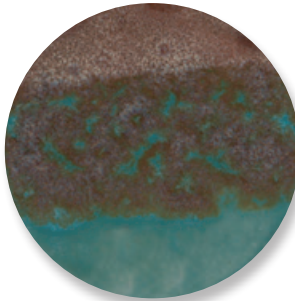
Cone 10  
SW-169 under SW-252



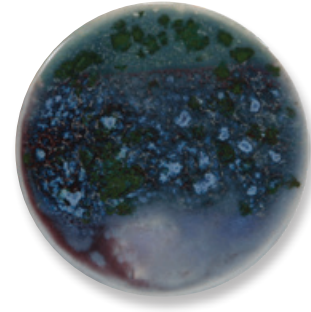
Cone 10  
SW-252 under SW-173



Cone 10  
SW-170 under SW-201



Cone 10  
SW-255 under SW-168



Cone 10  
SW-252 under SW-171





Mayco Colors  
Coloramics, LLC  
4077 Weaver Court S.  
info@maycocolors.com  
www.maycocolors.com  
T: 614-876-1171  
F: 614-876-9904

MaycoColors.com

MC-411e